

Mission Statement

Improving the water quality/quantity issues in the watershed, while also promoting a healthy agricultural, industrial, and recreational based economy for the region.

Inside this issue:

- | | |
|--|--------|
| • What Areas are Covered by HCWP Cost-Share Funds? | Page 2 |
| • Septic System Upgrade Loan Funds Available | Page 2 |
| • 2016 Cover Crop Cost-Share Program Now Available | Page 3 |
| • Become a Citizen Monitor! | Page 3 |
| • HCWP Water Quality Monitoring | Page 4 |
| • The Watershed Approach in the Hawk Creek Watershed | Page 5 |
| • Kids' Corner | Page 5 |

Cost-Share Money Available for Best Management Practices

Do you have gullies, washouts, runoff issues, or erosion issues on your property? Are you interested in finding out what you can do to increase conservation practices on your property? The Hawk Creek Watershed Project (HCWP) has funding available for the design and installation of Best Management practices (BMPs) to fix erosion and water quality issues on your property and to help reduce the amount of pollutants entering our streams and lakes. Cost-share funds are available up to 75% of total BMP project costs, depending on funding availability. Since 1999, HCWP has worked with over 900 landowners on over 1,300 projects aimed to reduce erosion and improve water quality. Let HCWP help find a solution to your erosion and water quality issues.

Some of the practices that may qualify for funding include, but are not limited to:

Ag Waste Upgrades

Alternative Intakes

Bank/Grade Stabilizations

Controlled Drainage

Cover Crops

Farmable Terraces

Feedlot and Water Diversions

Grassed Waterways

Lakeshore Restorations

Rain Gardens

Side/Drop Inlets

Streambank Erosion Control

Call HCWP at 320-523-3666 for assistance with your erosion or runoff problem.

The following offices are also available for information on potential projects:

Chippewa County SWCD/NRCS
320-269-2139 ext. 3

Kandiyohi County SWCD/NRCS
320-235-3906

Renville County SWCD/NRCS
320-523-1553 ext. 3

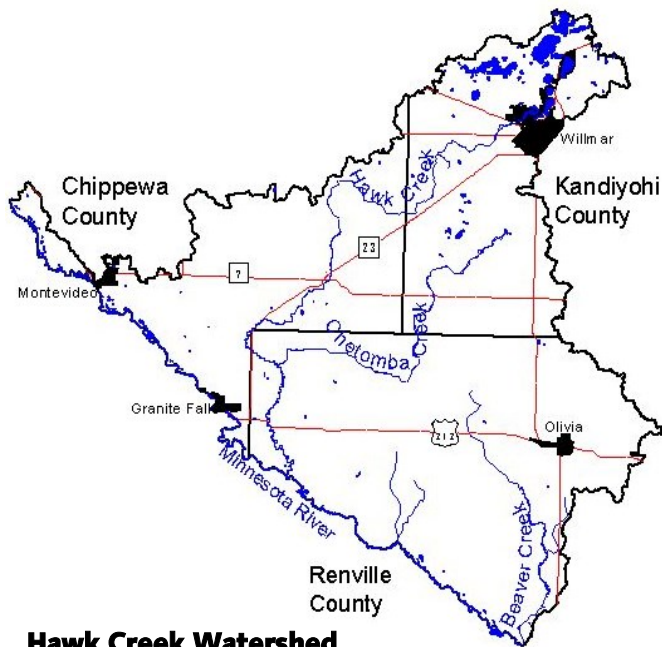
Chippewa County Ag Inspector
320-269-7447

Kandiyohi County Drainage
320-235-3266

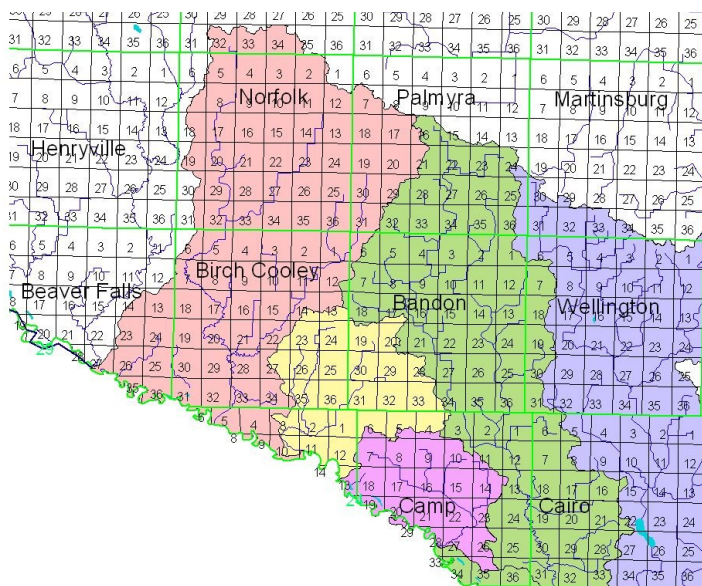
Renville County Ag Inspector
320-523-3712

What Areas are Covered by HCWP Cost-Share Funds?

HCWP has BMP cost-share funds available for the entire Hawk Creek Watershed, which covers the eastern portion of Chippewa County, the western portion of Kandiyohi County, and the western portion of Renville County (see map below left). Towns located within the Hawk Creek Watershed boundaries include part of Montevideo, part of Granite Falls, Maynard, Clara City, Raymond, part of Willmar, Prinsburg, Blomkest, Pennock, Sacred Heart, Renville, Danube, Olivia, and Bird Island. In addition, HCWP BMP cost-share funds are available for the Renville County portion of the Middle Minnesota Watershed, which encompasses Morton, Franklin, and Fairfax (see map below right). If you live or own property in or near any of these towns, feel free to contact HCWP for more information and possible cost-share assistance!



Hawk Creek Watershed



Renville County Portion of Middle MN Watershed

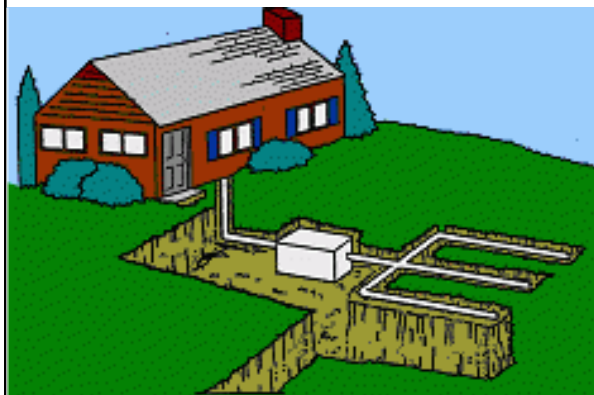
Septic System Upgrade Loan Funds Available

Low interest (3%) loan funds to upgrade non-compliant subsurface sewage treatment systems are available to residents within the Hawk Creek Watershed. These funds are not available for new home construction or upgrades that are required due to home additions. There is no collateral required as loan payments are collected through a special assessment on your property tax statement for a term length of 10 years. Loans can be transferred to new owners if a property is sold or transferred. These funds are limited and are distributed on a first come, first serve basis. Applications are made with your county environmental services office:

Chippewa County Land and Resources Management • 629 N 11th St, Montevideo • 320-269-6231

Kandiyohi County Environmental Services • 400 Benson Ave SW, Willmar • 320-231-6229

Renville County Water and Household Hazardous Waste Management • 500 E DePue Ave, Olivia • 320-523-3760



Why should I ensure my septic system is in compliance?

- To prevent disease, illness, or death from ingestion or contact with untreated sewage that may contain bacteria, viruses, and parasites
- To prevent phosphorus from entering surface waters and contributing to algal blooms and degrading our rivers and lakes
- To prevent contamination of groundwater that 2/3 of Minnesotans rely on for drinking water

For more information on septic maintenance, visit the Minnesota Pollution Control Agency's (MPCA) website at pca.state.mn.us or the HCWP website at hawkcreekwatershed.org.

2016 Cover Crop Cost-Share Program Now Available

HCWP, with assistance from the Chippewa, Kandiyohi, and Renville NRCS/SWCD offices and the Renville County Water Management office, is again offering cost-share assistance for the implementation of cover crops on a first come, first serve basis, depending on funding availability. Guidelines to the program include:

- Cost-share up to 75% of seed, labor, and equipment use costs to plant cover crops
- Maximum payment is \$2,000.00 per landowner
- Cost-share application must be signed and approved **before** seeding
- Seed mix must be comprised of at least two species approved by authorized SWCD or HCWP staff
- Must be seeded between June 15, 2016 and September 16, 2016
- No fall tillage, harvesting of cover crop, or excessive grazing (as determined by authorized SWCD or HCWP staff)
- Seeding must be inspected before payment is made
- Must bring in seed tags and invoices
- Land that receives cover crop incentive and/or cost-share payment through any other program (e.g. EQIP, CSP) is ineligible for this cost-share



Field planted with a cover crop of oats and radishes.



Close up of field planted with oats and radishes.

Become a Citizen Monitor!

Why should I become a Citizen Monitor?

Becoming a member of the HCWP Citizen Monitoring Network is fun and exciting! It's an opportunity to be outdoors, learn more about your environment, and contribute valuable information to the Minnesota Climatological Network. Plus, you get to use some great equipment, like the rain gauge in the photo to the right.

What does a Citizen Monitor do?

A Citizen Monitor can monitor either rainfall, stream transparency with a Secchi tube, and/or lake transparency with a Secchi disc. Transparency measures the amount of sediment or particles in the water (the more particles in the water, the less clear the water).

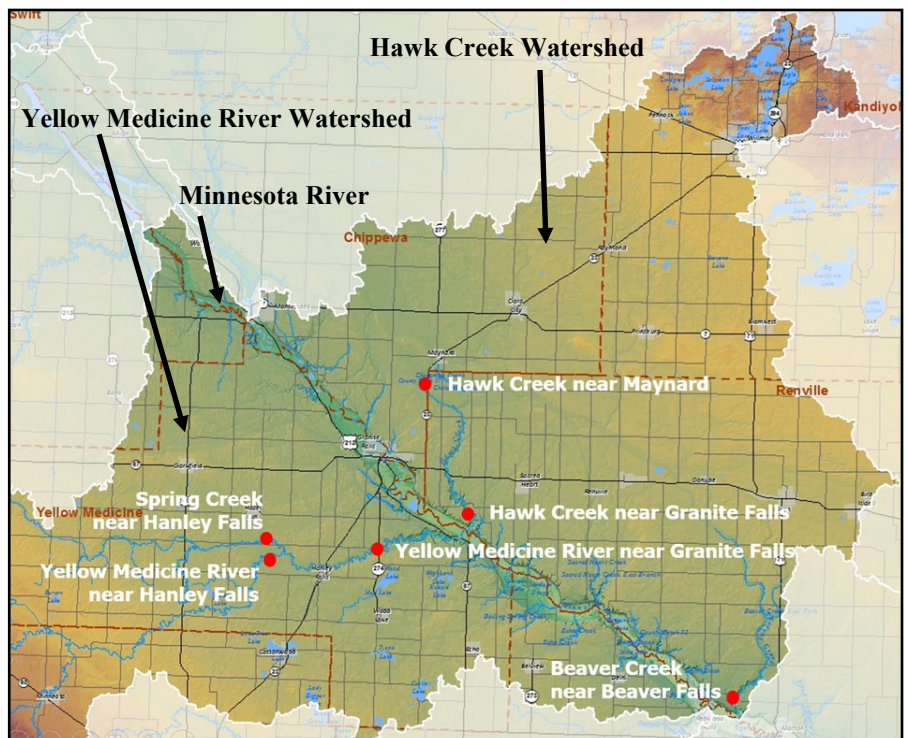
How do I become a Citizen Monitor?

Call the HCWP at (320) 523-3666 and tell us you would like to monitor rainfall and/or transparency. We will send you the monitoring equipment, more information, and help get you set up.



HCWP Water Quality Monitoring

MPCA contracts with HCWP to conduct water quality monitoring as part of the MPCA's Watershed Pollutant Load Monitoring Network (WPLMN), which is a long-term program that collects water quality data from streams and rivers throughout Minnesota and tracks water quality trends. HCWP collects water quality samples at three sites in the Hawk Creek Watershed and at three sites in the Yellow Medicine River Watershed (see right and below for site locations). For more information on the WPLMN, visit MPCA's website at <https://www.pca.state.mn.us/water/watershed-pollutant-load-monitoring-network>.



Hawk Creek Watershed Sites



Hawk Creek near Granite Falls



Hawk Creek near Maynard



Beaver Creek near Beaver Falls

Yellow Medicine River Watershed Sites



Yellow Medicine River near Granite Falls



Yellow Medicine River near Hanley Falls

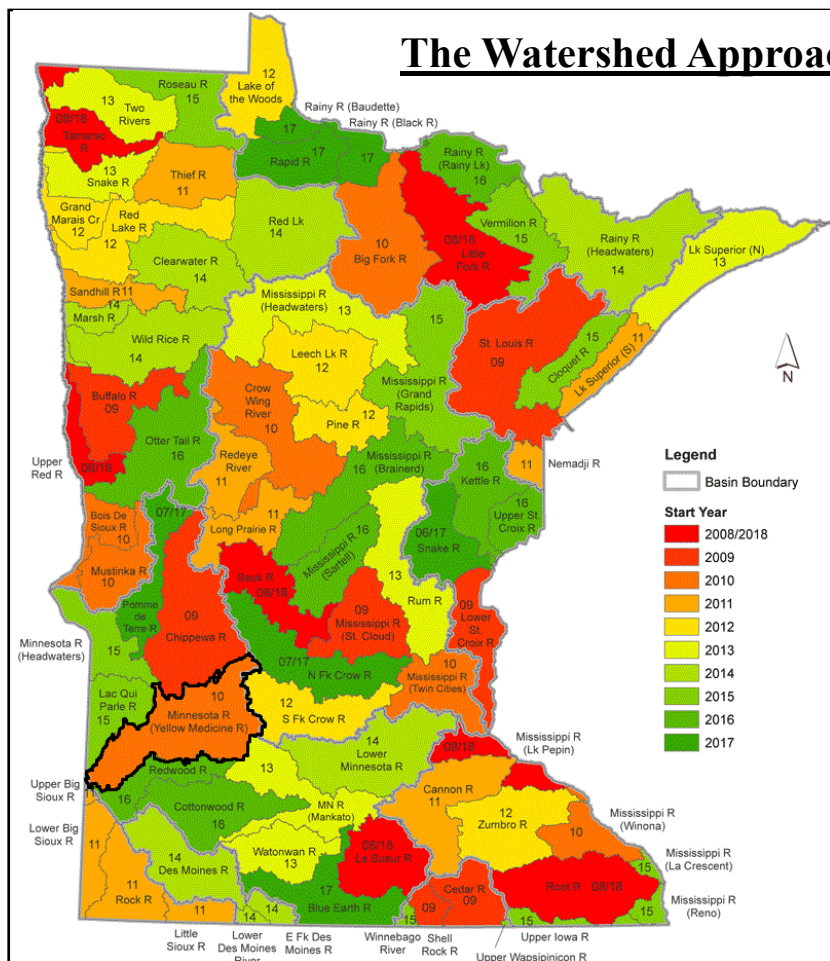


Spring Creek near Hanley Falls

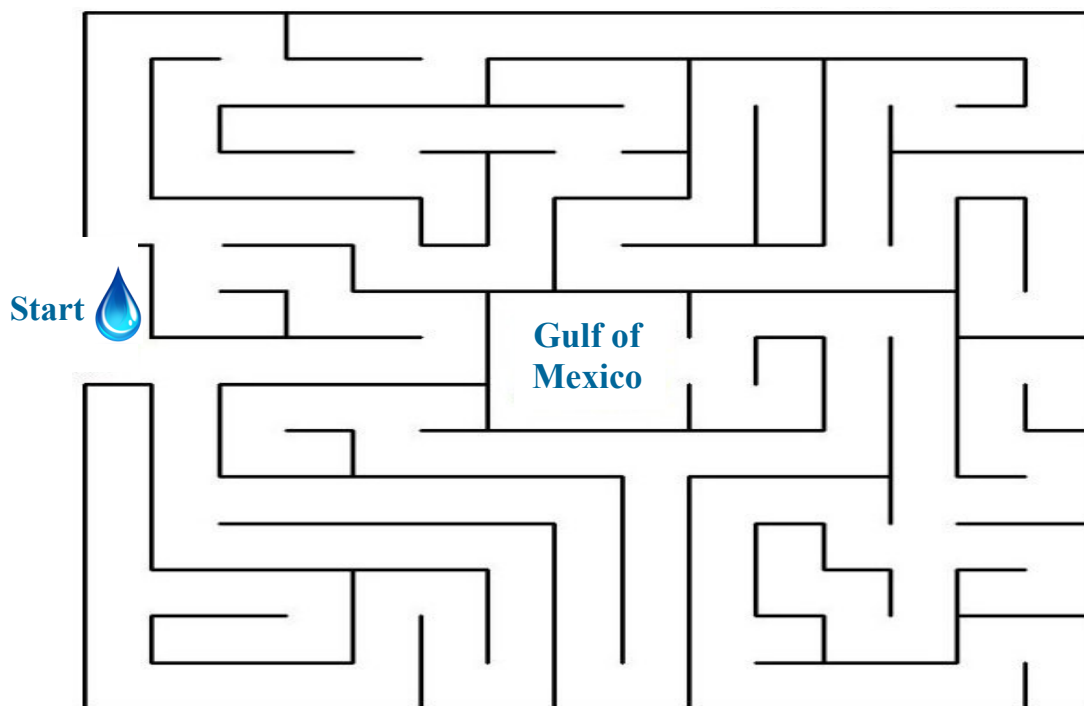
The Watershed Approach in the Hawk Creek Watershed

Mandated by the Minnesota State Legislature (Statute 114D.26) and administered by MPCA, the Hawk Creek Watershed is currently going through its first Watershed Approach cycle, which requires each major watershed to go through a 10 year cycle to collect and assess data on the health of the watershed and develop strategies to restore impaired waterbodies and protect those that are healthy, and then carry out those strategies, called WRAPS (Watershed Restoration and Protection Strategies). The 10 year cycle is continuous, so data will continue to be collected to determine if water quality has improved or not and the strategies will be reassessed as needed. Although the WRAPS is mandated by the State and is the responsibility of MPCA to carry out, HCWP, watershed citizens, and landowners have been involved to help bring a local voice to the process.

The Hawk Creek Watershed began its 10 year cycle in 2010 (see map). A biological impairment assessment report and a stressor identification report for the Hawk Creek Watershed are available on the MPCA and HCWP websites (pca.state.mn.us and hawkcreek-watershed.org), along with more information on the Watershed Approach. The WRAPS report is expected in 2016.



Kids' Corner



The water in the Hawk Creek Watershed drains to the Minnesota River, then to the Mississippi River, and eventually to the Gulf of Mexico. Pretend you are a drop of water and solve the maze to make your way to the Gulf of Mexico!



Renville County
Hawk Creek Watershed Project
500 E DePue Ave
Olivia MN 56277

PRSRT STD
U.S. Postage
PAID
Olivia, MN
Permit # 8807

Project Partners:

Chippewa County
Chippewa County SWCD/NRCS
City of Clara City
City of Olivia
City of Willmar
Ducks Unlimited
Eagle Lake Association
Kandiyohi County
Kandiyohi County SWCD/NRCS
Long Lake Association
MN Department of Natural Resources
MN Pollution Control Agency
Pheasants Forever
Renville County
Renville County SWCD/NRCS
U.S. Fish and Wildlife Service
Watershed Citizens and Landowners

**Want to get notices
about upcoming HCWP
meetings and events?**

Join our mailing list by calling
320-523-3666 or emailing
jordan@hawkcreekwatershed.org.

Check us out on the web!

www.hawkcreekwatershed.org